

AQUAMOR
FOODSERVICE



2021 PRODUCT CATALOG

TABLE OF CONTENTS

Family, Friends & Aquamor	2
Why Partner with Aquamor?	3
What is Aquamor Foodservice?	4
What is Catamount™?	5
Your Business Partner	6
Side by Side Comparison	7
Inside Aquamor Facility	9
Water Filtration Value	11
Foodservice / Applications	12
Certifications	14
Aquamor Foodservice Catamount™ Application Guide	16
Catamount™ Product Line.....	21
Legacy Product Line	23

FAMILY, FRIENDS & AQUAMOR

At Aquamor, formerly TST Water, we know that it is about relationships with family and friends. We understand that it is moments like these that bring us together as a family, community and society to share a meal, decompress from the business of life, discuss the day, a special event and some laughter; where simplicity and the little details become so important. We are committed to traditional family values



such as love, trust, loyalty, support and hard work. We truly believe time shared together at coffee shops and favorite restaurants allows us to connect as families and communities both personally and professionally. These core values are what drive us every day to create products that make the times we do get to spend together more memorable.

Aquamor is proud to announce that we have developed a new comprehensive water treatment program; which will provide a peace of mind to the industry as it pertains to quality, breadth of product offerings and unique forward-thinking features.

Our innovative Aquamor Foodservice Catamount™ product line, years in the making, exemplifies our values and was specifically engineered with technology and innovation in mind. Following hands on experience and listening to the various industry members, we listened to the requests, trouble points and water quality needs. After years of research, we developed a plan on how best to approach these requests and developed a sophisticated solution what we call our Catamount™ product line which will provide a peace of mind throughout the water treatment industry.

We also understand how important it is to have options. We are excited to have built upon our Aquamor Foodservice Legacy platform to offer all major replacement filters. Held within this catalog is a planned and meticulously developed comprehensive replacement filtration program. We believe that through our planned engineering and development, Aquamor is able to provide a direct solution and replacement package for **ALL** products currently in the marketplace.

At Aquamor, we value family, integrity and quality. This is why we have all of our Aquamor Foodservice Catamount™ products proudly manufactured in the U.S.A. With our vertically integrated headquarters located in Southern California, Aquamor is able to develop, engineer and manufacture products that are certified all under ONE roof. Backed by individuals who themselves take the time after a busy week to sit and share a meal with their families. Aquamor understands the importance of every aspect of the experience, from the water and ice cubes served, to the beverages, meals and beyond.

From our Aquamor family to yours, we hope you enjoy the thought and effort features which have been built into this entire Aquamor Foodservice program.

WHY PARTNER WITH AQUAMOR?

With over 150+ years of industry knowledge and experience, we know what we're doing.

We know that high quality water is the cornerstone of your products. Clean, clear, filtered water is the main ingredient that provides your customers with great tasting beverages. Chlorine, Chloramine, hardness, and organics are all contaminants that contribute to unpleasant tasting beverages. With proper filtration, these contaminants can be removed to create healthier, better tasting water for soft drinks, ice machines, steamer units, processing equipment and drinking water.

Products available in today's marketplace have features and technologies that haven't changed in recent years.

With this in mind, Michael Baird, CEO of Aquamor, LLC, gathered a group of industry leaders with over 150+ years of experience to investigate the future of expanding the market for replacement water filters in the beverage and foodservice industries. They consulted with major beverage and food equipment manufacturers during the concept phase of new product development. The goal was to develop a product line that would meet or exceed all OEM specifications as well as developing a new, feature-packed filtration solution to replace them completely.

Currently, all major big box hardware retailers and many mass merchants partner with and trust Aquamor, LLC. with their residential water filtration needs. You can partner with Aquamor too!

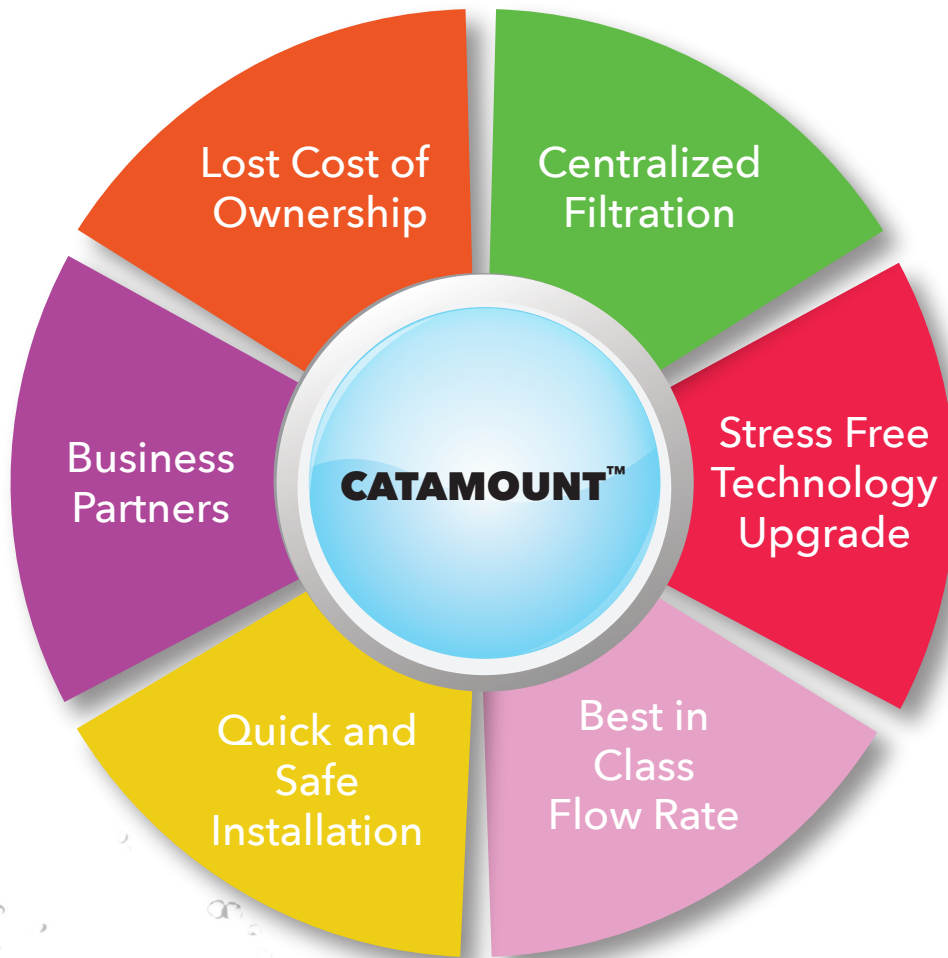


AQUAMOR
FOODSERVICE



CATAMOUNT™ SERIES

Aquamor Foodservice is a comprehensive water treatment product line of filters and systems that were designed to provide peace of mind to the foodservice industry as it pertains to water quality, breadth of product offerings, unique next generation features and benefits. All products are proudly Made in the U.S.A. Whether you are looking to upgrade to the highest quality systems available or find high quality replacements for existing products, the Aquamor Foodservice program is your one-stop shop for all your filtration needs.



CATAMOUNT™ - THE EVOLUTION OF FILTER SYSTEM TECHNOLOGY

The Catamount™ product line was specifically engineered after years of industry research to address what our customers expressed were their concerns and trouble points regarding existing filtration offerings.

Catamount™ offers a proprietary cartridge-to-head interface providing these FIRST-IN-CLASS features:

- **Patented BIS (Bypass Integrity System)** guarantees you will never have unfiltered water in your product
- **Reverse compatibility** gives you a stress free option to upgrade to the newest technology while knowing you can revert to any major filter brand, should the need arise, allowing all Manufacturers to finally get along with one another
- **Vent/Leak Detectors**
- **Auto-Leveling Technology** ensures perfect installation each time
- **Auto Shut-Off and pressure relief** are built-in to ensure simple and safe installation and system maintenance

CATAMOUNT™ BEST IN CLASS

- Individual filters rated up to 7.5 gpm
- Up to 250,000+ gallons Chlorine reduction per cartridge
- Up to 25,000+ gallons Chloramine reduction per cartridge

Why spend money on multiple filters when one Catamount™ cartridge can do the job?

SCALE PROTECTION USING OUR PATENTED "SCALE REDUCTION MEDIA"

Using 3-4 times more scale reduction media than many of the leading manufacturers



With so many benefits, why go anywhere else?

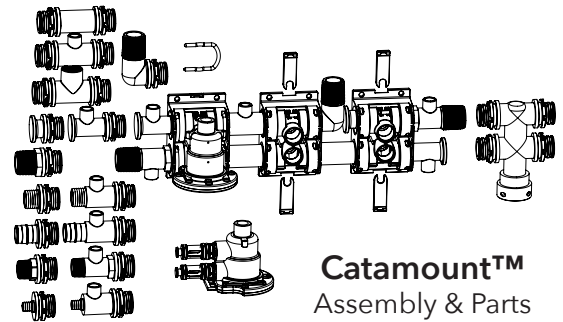
CATAMOUNT™ BUILD-ON-THE-WALL PROGRAM

Design and configure the proper filtration system for any application using our free and easy web app which assists you in selecting the perfect configuration every time. Centralized filtration reduces SKU count and inventory, saving space and money. Works with Apple and Android.

Our water treatment experts are available to assist in optimizing every installation ensuring you have the correct configuration for your application.

Modular design makes complexity simple by providing your installer the ability to do the following on-location in one visit:

- Configure systems in a series flow path
- Configure systems in a parallel flow path
- Mix and match serial and parallel flows
- Add filtration capacity
- Add special pre and/or post filtration (scale reduction) packages seamlessly



CATAMOUNT™ AFFORDABLE & COMPETITIVELY PRICED = INCREASED ROI

Catamount™ systems offer the lowest cost of ownership for any foodservice system through:

- Best in class performance
 - Modular Design for simple customization and expandability
 - Proven scale control performance
 - High capacity low pressure drop configuration
- And so much more!!



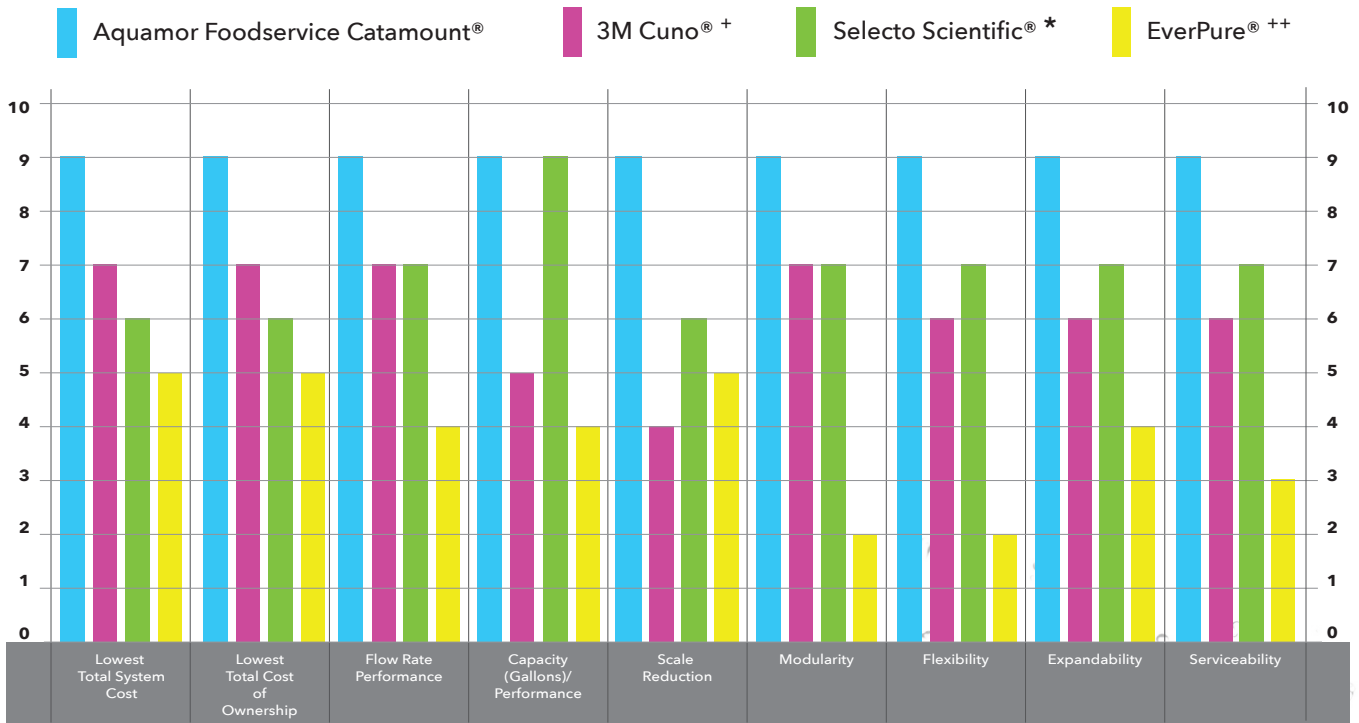
CATAMOUNT™ CAPACITIES AND VALUE PROPOSITION

Catamount™ has the highest water filter performance capacities available in the foodservice filtration market. In many cases, replacing multiple cartridge systems. Catamount™ has a single Chloramine reduction cartridge that meets NSF/ANSI Chloramine Reduction Standard for up to 60,000 gallons with a flow rate of 3.5 GPM. This high-performance line also includes a single High Flow cartridge that will flow at 7.5 GPM and meets NSF/ANSI Chlorine Reduction Standard for over 250,000 gallons. These models carry the highest claims in the world for a single cartridge of its size, and meet some of the largest customer’s requirements in the industry! This type of solution saves money throughout the supply chain.

Also, Catamount™ extends the Aquamor commitment to “Made in U.S.A.” through **Quality, Workmanship, Performance and Price.** The result is a foodservice water treatment platform that covers a full range of foodservice products from basic sediment reduction units through sub-micron carbon block, resin technologies, UF & RO. All in an easy-to-install, modular platform that is both “forward” and “backwards” compatible. We enable the customer to revert to their previous cartridge configuration with our unique manifold design if not satisfied with our Catamount™ cartridges. There is no other manufacturer that can offer the lowest assured cost of ownership as Aquamor’s new Aquamor Foodservice Catamount™ product line.



CATAMOUNT™ SIDE BY SIDE COMPARISON



LEGACY - SUPERIOR QUALITY COMPATIBLE FILTERS

Our NSF Certified Legacy platform offers replacement filters for all major filter brands. We are confident that we can provide you with a direct solution and replacement packages for product currently used in the market place. Our products meet or exceed OEM performance for flow, filtration, and capacities.

We offer the highest quality compatible filters for:

3m/Cuno® +

Selecto Scientific® *

Everpure® ++

Antunes **

Hoshizaki® +++

+ Cuno is a registered trademark of the 3M Company.

++ Everpure® is a registered trademark of Everpure Inc. Northbrook, IL

+++ Hoshizaki is a registered trademark of Hoshizaki Electric Co., Ltd. Corporation Japan.

* Selecto Scientific is a registered trademark of Selecto, Inc.

** Antunes is a registered trademark of A. J. Antunes & Co.



AQUAMOR FACILITY

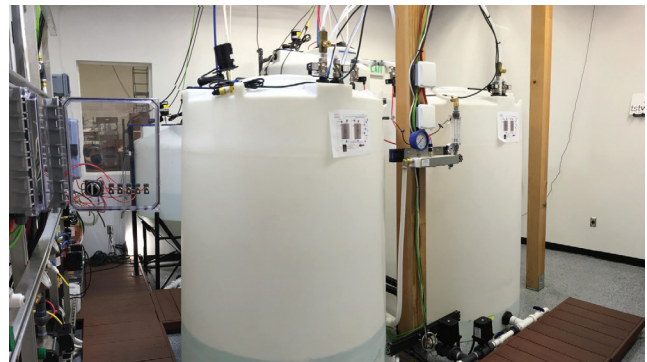
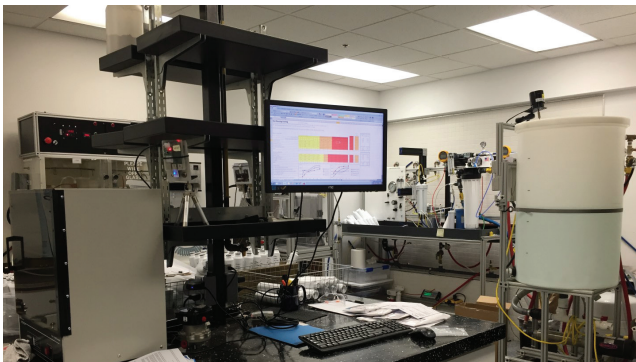
ALL PRODUCTS PROUDLY MADE IN THE U.S.A.

All of Aquamor Foodservice's new Catamount™ products are Manufactured in Temecula, California (Southern California - Wine Country).

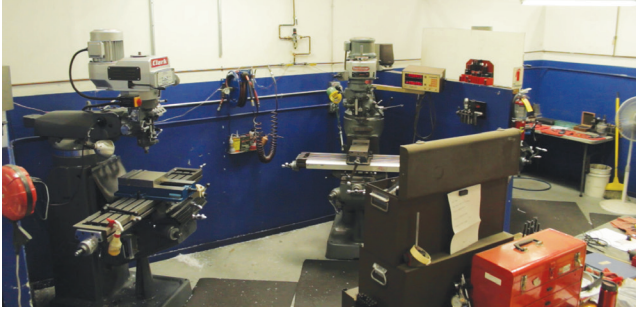


OUR VERTICALLY INTEGRATED MANUFACTURING & PRODUCT DEVELOPMENT

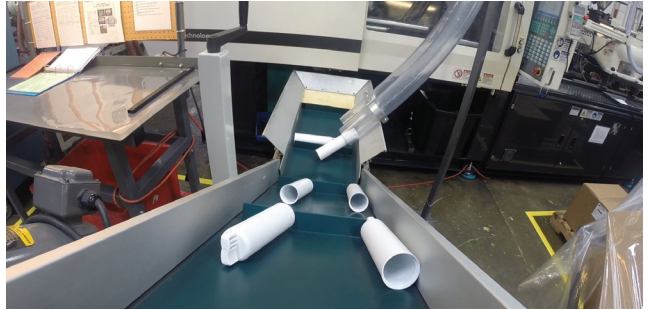
IN-HOUSE LABORATORIES



TOOL ROOM / MACHINING



PLASTIC INJECTION MOLDING



CARBON BLOCK MANUFACTURING



ASSEMBLY PRODUCTION LINES



WHY DOES WATER FILTRATION ADD SIGNIFICANT VALUE IN YOUR FOODSERVICE OPERATION?

High quality water in your foodservice operation adds tremendous value to you in several ways that can save you time and money.

To begin, high quality ingredient water can be used to prepare food, beverages and ice. Better tasting food and beverages will drive customer satisfaction resulting in repeat business yielding higher sales and profits.

Secondly, high quality water filtration systems will help reduce equipment down time, expensive maintenance and repairs.

In addition, high quality water filtration systems will reduce overall labor costs in terms of preventive maintenance of your equipment, as well as increasing operating efficiencies and reducing power consumption.

Lastly, high quality water filtration products that hold regulatory health claims, will protect you and your customers from unwanted health concern contaminants.

When proper water filtration is installed in your foodservice operation, you will serve better products more efficiently and save money to the bottom line of your business.

Following are the “BIG 4” reasons to install Catamount™ water filtration systems in your foodservice / beverage operation:

OPERATIONAL FUNCTION	OPERATIONAL PURPOSE
Mechanical / Physical (Total Suspended Solids)	Equipment Maintenance / Drink & Food Quality
Taste & Odor (Chemical or Organic)	Drink & Food Quality Enhancement (Aesthetic)
Scale Reduction / Softening	Equipment Maintenance & PM Reduction
Health Claims	Personal Safety & Protection



FOODSERVICE

COMMON WATER QUALITY CHALLENGES

- Turbidity / Particulate / Total Suspended Solids (TSS)
- Chemicals (Chlorine / Chloramine)
- Total Dissolved Solids (TDS)
- Total Hardness / Scale (Calcium / Magnesium)
- Cyst & Microbiological Contaminants (Health)
- Organics (Affect negative taste and odor)
- Chlorides (Corrosion)
- Lead
- Sulfates
- Iron (Ferrous / Ferric)

WATER TREATMENT TECHNOLOGIES

- Activated Carbon Block (Adsorption/Absorption)
- Granulated Activated Carbon (Adsorption/Absorption) GAC
- Sediment / Mechanical Filtration (Particle Filtration /Micro Filtration /Ultra Filtration)
- Nano-Filtration (similar to R.O. - less TDS rejection - 80-90%)
- Reverse Osmosis (R.O.)
- ION Exchange Water Softeners
- Weak Acid Cation Resin (WAC)
- Strong Acid Cation Resin (SAC)
- Template Assisted Crystallization (TAC)
- Sodium Based Cation Resin
- Phosphates
- Ozone Disinfection
- Ultra Violet (UV)
- Special Medias (Microbiological, Scale, Iron, etc.)

APPLICATIONS

- Drip Brew Coffee and Tea
- Espresso Based Coffee Products
- Carbonated and Non-Carbonated Drinks (including drinking water)
- Ice Machine / Frozen Carbonated Beverage (FCB)
- Flash Steamers and Proofers
- Boiler Tank Based Steamers
- Drinking / Table Water
- Ware Washers

APPLICATIONS / FLOW RATES

WATER USING EQUIPMENT	USEFUL WATER TREATMENT TECHNOLOGIES
Post Mix Soda Dispenser:	1.67 GPM per Carbonator
Ice Machine / Frozen Carbonated Beverage (FCB):	1.25 GPM
Espresso Based Coffee:	0.25 GPM
Drip Brew Coffee:	1 GPM
Drip Brew Tea:	1 GPM
Fruit Juices:	2 GPM
Flash Steamer:	0.1 GPM
Boiler Tank Based Steamer:	1 GPM
Combi-Oven:	0.75 GPM
Drinking / Table Water:	1 GPM
Reverse Osmosis Unit (100 GPD):	1.5 GPM
Proofing Unit:	1 GPM
Ware Washers:	2-10 GPM (depending on equipment)

APPLICATION / TECHNOLOGIES

WATER USING EQUIPMENT	USEFUL WATER TREATMENT TECHNOLOGIES
Post Mix Soda Dispenser:	Carbon Block, GAC
Ice Machine / Frozen Carbonated Beverage (FCB):	Carbon Block, GAC, Phosphates, Resins
Espresso Based Coffee:	R.O. if >100 TDS, <100 TDS Carbon Block
Drip Brew Coffee:	Phosphates, Resins, R.O. if above 150 TDS
Drip Brew Tea:	Phosphates, Resins, R.O. if above 150 TDS
Fruit Juices:	Carbon Block, GAC
Flash Steamer:	R.O. if >100 TDS, Resins
Boiler Tank Based Steamer:	R.O. if >100 TDS, Resins
Combi-Oven:	R.O. if >100 TDS, Resins
Drinking / Table Water:	Carbon Block, GAC
Reverse Osmosis Unit Pre-Treatment (100 GPD):	Carbon Block Pre/Post Filtration
Proofing Unit:	Phosphates, Resins, R.O.
Ware Washers:	Phosphates, Resins



CERTIFICATIONS / LISTINGS

Aquamor Foodservice's primary Certification laboratories and/or Agencies include: NSF & IAPMO.

For the North American foodservice market, our primary Certifications are focused on NSF/ANSI Standards and listings.

NSF (Drinking Water Treatment Units) DWTU

Standard 42:	Aesthetic Claims - Taste, Odor, Clarity (Chlorine, Chloramine, Particulate, etc.)
Standard 53:	Health Claims (Turbidity, Cyst, Lead, VOC reduction, etc.)
Standard 55:	UV Standards (Disinfection)
Standard 58:	R.O. Standard (TDS Reduction and Health Claims)
Standard 401:	Emerging Compounds (Incidental Contaminants)
Standard P231:	Microbiological Purifier

All NSF listed Aquamor Foodservice products have minimally passed both Material Safety and Structural Integrity testing. Refer to product data sheet for complete list of certified claims.

Regulatory References (please see below links):

www.nsf.org www.wqa.org
www.iapmo.org www.moh.gov.cn



MICROBIOLOGICAL STANDARDS (for consumable/potable water)

Total Plate Count (Colony Forming Unit):	< 500 CFU/mL (<100 CFU for some AOW's)
E. Coli:	Non-Detectable in 100 mL
Total Coliform:	Non-Detectable in 100 mL

NSF (Drinking Water Treatment Units) DWTU

Mechanical or Physical constituents of water tend to be those non-dissolved (suspended or TSS) particulates that can produce color to the water or be indicators of potential micro-organisms. In severe cases, particulates can cause equipment problems.

Color:	< 5 TCU (True Color Units)
Turbidity:	< or equal to 0.5 NTU

Limits of Chemicals can be found in varying concentrations in many water sources. While their presence does not generally present a health risk, concentrations in excess of the stated limits can cause off-tastes in soft drinks, ice, juices and other dispensed beverages. The water should not contribute any taste or odor to dispensed beverages.

STANDARD OPERATING TARGETS FOR BEVERAGE / ICE (ideal)

Total Dissolved Solids (TDS):	<500 mg/L Limit (closer to 100 TDS Ideal)
Total Chlorine:	<0.5 mg/L
Chloramine:	< 0.5mg/L
Chlorides:	< 100 mg/L
Sulfates:	< 250 mg/L
Iron (Ferrous or Ferric):	< 0.3 mg/L
Hardness (as calcium carbonate) - Ice/Coffee/Tea:	< 100 mg/L (5.8 gpg Total Hardness)
Total Alkalinity:	< 150mg/L
pH:	6.5 - 8.5

ESPRESSO BASED COFFEE AND STEAMERS (including COMBI's)

Espresso and steamer equipment require more stringent specifications to prevent mineral scale formation, and to ensure quality beverages. Specifications for espresso and steamers are listed below. Achievement of these standards are contingent upon provision of inlet water that meets the above chemical limits.

Total Dissolved Solids (TDS):	50-100 mg/L
Carbonate Hardness:	<5 gpg Carbonate Hardness
Total Hardness:	<7 gpg Total Hardness
pH:	6.5 - 8.5

CATAMOUNT™ SERIES

APPLICATION GUIDE

DRIP BREW COFFEE AND TEA APPLICATIONS (INCLUDING OCS)

REDUCES:

- Undesirable tastes and odors
- Lime-scale and corrosion
- Abrasion and clogging
- 99.5% Cyst

VERIFICATIONS:

- Meets NSF Standard 42 - Chlorine Reduction
- Meets NSF Standard 372 - Lead Free

BENEFITS:

- High quality, great tasting coffee or tea
- Lower maintenance and equipment costs
- Higher efficiencies and lower energy cost
- Lower labor cost of PM
- Increased sales and profits



SYSTEM MODEL #	MICRON	FLOW RATE	CAPACITY	REDUCTION CLAIMS	REPLACEMENT CARTRIDGE
BGX1-2423P	0.2	3.00 gpm	55,000 gal	Cyst, Chlorine Taste and Odor, Scale Control	BGX-2423P
BGX1-2425P	5.0	2.10 gpm	55,000 gal	Particulate, Chlorine Taste and Odor, Scale Control	BGX-2425P



CATAMOUNT™ SERIES

APPLICATION GUIDE

ESPRESSO BASED COFFEE/ STEAMER & PROOFER APPLICATIONS

REDUCES:

- Undesirable tastes and odors
- Lime-scale and corrosion
- Abrasion and clogging

VERIFICATIONS:

- Meets NSF Standard 42 - Chlorine Reduction
- Meets NSF Standard 372 - Lead Free

BENEFITS:

- High quality Espresso
- Lower maintenance and equipment costs
- Higher efficiencies and lower energy cost
- Lower labor cost of PM
- Increased sales and profits



SYSTEM	MEDIA	FLOW RATE	CAPACITY	REDUCTION CLAIMS	REPLACEMENT CARTRIDGE
BGX1-2400N	Standard Resin	3.00 gpm	2,000 gpg*	Softening	BGX-2400N
BGX1-2400W	Weak Acid (WAC)	3.00 gpm	1,700 gpg*	Softening	BGX-2400W
BGX1-4900N	Standard Resin	3.00 gpm	4,500 gpg*	Softening	BGX-4900N
BGX1-4900W	Weak Acid (WAC)	3.00 gpm	3,000 gpg*	Softening	BGX-4900W

* Capacity is estimated based upon standard water conditions. Actual capacity may vary based upon incoming water characteristics.



CATAMOUNT™ SERIES

APPLICATION GUIDE

CARBONATED AND NON-CARBONATED DRINK APPLICATIONS

REDUCES:

- Undesirable tastes and odors (Chlorine)
- Corrosion
- Abrasion and clogging
- 99.5% Cyst

VERIFICATIONS:

- Meets NSF Standard 42 - Chlorine Reduction
- Meets NSF Standard 372 - Lead Free

BENEFITS:

- High quality, great tasting drinks
- Lower maintenance and equipment costs
- Carbonation retention
- Lower labor cost of PM
- Increased sales and profits



SYSTEM	MICRON	FLOW RATE	CAPACITY	REDUCTION CLAIMS	REPLACEMENT CARTRIDGE
BGX1-2423X	0.2	3.00 gpm	55,000 gal	Cyst, Sediment, Chlorine Taste and Odor	BGX-2423X
BGX1-2425X	5.0	2.10 gpm	55,000 gal	Sediment, Chlorine Taste and Odor	BGX-2425X
BGX1-4323X	0.2	3.40 gpm	60,000 gal	Cyst, Sediment, Chlorine Taste and Odor	BGX-4323X
BGX1-4325X	5.0	3.40 gpm	60,000 gal	Sediment, Chlorine Taste and Odor	BGX-4325X
BGX1-4923X	0.2	5.00 gpm	75,000 gal	Sediment, Chlorine Taste and Odor	BGX-4923X
BGX1-4925X	5.0	5.00 gpm	75,000 gal	Sediment, Chlorine Taste and Odor	BGX-4925X



CATAMOUNT™ SERIES

APPLICATION GUIDE

CHLORAMINE REDUCTION SYSTEMS

REDUCES:

- Undesirable tastes and odors (Chloramine)
- Corrosion
- Abrasion and clogging
- 99.5% Cyst

VERIFICATIONS:

- Meets NSF Standard 42 - Chloramine Reduction
- Meets NSF Standard 372 - Lead Free

BENEFITS:

- High quality, great tasting drinks
- Lower maintenance and equipment costs
- Carbonation retention
- Lower labor cost of PM
- Increased sales and profits



SYSTEM	MEDIA	FLOW RATE	CAPACITY	REDUCTION CLAIMS
BGX1-4933X	0.2	3.50 gpm	60,000 gal	Cyst, Sediment, Chlorine Taste and Odor, Chloramine
BGX2-4933X	0.2	7.00 gpm	120,000 gal	Cyst, Sediment, Chlorine Taste and Odor, Chloramine
BGX3-4933X	0.2	10.50 gpm	180,000 gal	Cyst, Sediment, Chlorine Taste and Odor, Chloramine
BGX1-4933P	0.2	3.50 gpm	60,000 gal	Cyst, Sediment, Chlorine Taste and Odor, Chloramine, Scale Control
BGX2-4933P	0.2	7.00 gpm	120,000 gal	Cyst, Sediment, Chlorine Taste and Odor, Chloramine, Scale Control
BGX3-4933P	0.2	10.50 gpm	180,000 gal	Cyst, Sediment, Chlorine Taste and Odor, Chloramine, Scale Control



CATAMOUNT™ SERIES

APPLICATION GUIDE

ICE MACHINES / FROZEN BEVERAGE (FCB) APPLICATIONS

REDUCES:

- Undesirable tastes and odors
- Lime-scale and corrosion
- Abrasion and clogging
- 99.5% Cyst

VERIFICATIONS:

- Meets NSF Standard 42 - Chlorine Reduction
- Meets NSF Standard 372 - Lead Free

BENEFITS:

- High quality, great tasting Ice or FCB
- Lower maintenance and equipment costs
- Higher efficiencies and lower energy cost
- Lower labor cost of PM (cleaning)
- Increased sales and profits



SYSTEM	MICRON	FLOW RATE	CAPACITY	REDUCTION CLAIMS	REPLACEMENT CARTRIDGE
BGX1-2425P	5.0	2.10 gpm	55,000 gal	Sediment, Chlorine Taste and Odor, Scale Control	BGX-2425P
BGX1-4323P	0.2	3.40 gpm	60,000 gal	Cyst, Sediment, Chlorine Taste and Odor, Scale Control	BGX-4323P
BGX1-4325P	5.0	3.40 gpm	60,000 gal	Sediment, Chlorine Taste and Odor, Scale Control	BGX-4325P
BGX1-4916P	10.0	15.0 gpm	150,000 gal	Sediment, Scale Control	BGX-4916P
BGX1-4923P	0.2	5.00 gpm	75,000 gal	Cyst, Sediment, Chlorine Taste and Odor, Scale Control	BGX-4923P
BGX1-4925P	5.0	5.00 gpm	75,000 gal	Sediment, Chlorine Taste and Odor, Scale Control	BGX-4925P



BGX SERIES

MODEL NUMBER	PART NUMBER	MICRON	FLOW RATE	CAPACITY	REDUCES	DIMENSIONS
BGX-2100P	105304	10.0	3.50	50,000 gal	Scale	2.5 x 11
BGX-2123P	105301	0.5	1.70	20,000 gal	Cyst, Sediment, Scale, Chlorine Taste and Odor	2.5 x 11
BGX-2123X	105300	0.5	1.70	20,000 gal	Cyst, Sediment, Chlorine Taste and Odor	2.5 x 11
BGX-2125P	105303	5.0	1.70	20,000 gal	Sediment, Scale, Chlorine Taste and Odor	2.5 x 11
BGX-2125X	105302	5.0	1.70	20,000 gal	Chlorine Taste and Odor	2.5 x 11
BGX-2416P	105306	10.0	15.00	75,000 gal	Scale, Sand, Silt, Sediment, Rust	2.5 x 14
BGX-2416X	105305	10.0	7.50	75,000 gal	Sand, Silt, Sediment, Rust	2.5 x 14
BGX-2423P	105308	0.2	3.00	55,000 gal	Scale, Cyst, Turbidity, Sediment, Chlorine Taste and Odor	2.5 x 14
BGX-2423X	105307	0.2	3.00	55,000 gal	Cyst, Turbidity, Sediment, Chlorine Taste and Odor	2.5 x 14
BGX-2425P	105310	5.0	2.10	55,000 gal	Scale, Turbidity, Sediment, Chlorine Taste and Odor	2.5 x 14
BGX-2425X	105309	5.0	2.10	55,000 gal	Chlorine Taste and Odor	2.5 x 14
BGX-2433P	105312	0.2	1.70	20,000 gal	Scale, Cyst, Turbidity, Sediment, Chlorine Taste and Odor	2.5 x 14
BGX-2433X	105311	0.2	1.70	20,000 gal	Cyst, Turbidity, Sediment, Chloramine, Chlorine Taste and Odor	2.5 x 14
BGX-2400N	105315	25.0	3.00	2,000 gpg*	Softening	2.5 x 14
BGX-2400P	105293	25.0	5.00	75,000 gal	Sediment, Scale	2.5 x 14
BGX-2400W	105316	10.0	3.00	1,700 gpg*	Softening	2.5 x 14
BGX-4323P	105271	0.2	3.40	60,000 gal	Scale, Cyst, Turbidity, Sediment, Chlorine Taste and Odor	4.5 x 14
BGX-4323X	105270	0.2	3.40	60,000 gal	Cyst, Turbidity, Sediment, Chlorine Taste and Odor	4.5 x 14
BGX-4325P	105273	5.0	3.40	60,000 gal	Scale, Chlorine Taste and Odor	4.5 x 14
BGX-4325X	105272	5.0	3.40	60,000 gal	Chlorine Taste and Odor	4.5 x 14
BGX-4923P	105281	0.2	5.00	75,000 gal	Scale, Cyst, Turbidity, Sediment, Chlorine Taste and Odor	4.5 x 20
BGX-4923X	105280	0.2	5.00	75,000 gal	Cyst, Turbidity, Sediment, Chlorine Taste and Odor	4.5 x 20
BGX-4923PHC	105297	0.2	7.50	265,000 gal	Cyst, Sediment, Scale, Chlorine Taste and Odor, Reduction	4.5 x 20
BGX-4923XHC	105295	0.2	7.50	265,000 gal	Cyst, Chloramine, Chlorine Taste and Odor	4.5 x 20
BGX-4925P	105283	5.0	5.00	75,000 gal	Scale, Chlorine Taste and Odor	4.5 x 20
BGX-4925X	105282	5.0	5.00	75,000 gal	Chlorine Taste and Odor	4.5 x 20
BGX-4925PHC	105299	5.0	7.50	265,000 gal	Chlorine Taste and Odor, Scale	4.5 x 20
BGX-4925XHC	105298	5.0	7.50	265,000 gal	Chlorine Taste and Odor	4.5 x 20
BGX-4933P	105285	0.2	3.50	60,000 gal	Scale, Cyst, Turbidity, Sediment, Chlorine Taste and Odor	4.5 x 20
BGX-4933X	105284	0.2	3.50	60,000 gal	Cyst, Turbidity, Sediment, Chloramine, Chlorine Taste and Odor	4.5 x 20
BGX-4900N	105288	10.0	3.00	4,500 gpg*	Softening	4.5 x 20
BGX-4900W	105289	10.0	3.00	3,000 gpg*	Softening	4.5 x 20
BGX-4916P	105291	10.0	15.00	150,000 gal	Scale, Sand, Silt, Sediment, Rust	4.5 x 20
BGX-4916X	105290	10.0	15.00	150,000 gal	Sand, Silt, Sediment, Rust	4.5 x 20

* Capacity is estimated based upon standard water conditions. Actual capacity may vary based upon incoming water characteristics. All cartridges are sold in case quantities. BGX filters come 4 to a case.

BGM HF & SL SERIES FITS 3M/CUNO®**

MODEL NUMBER	PART NUMBER	MICRON	FLOW RATE	CAPACITY	REDUCES	DIMENSIONS	FITS IN PLACE OF
BGM-2100P	105243	10.0	3.50	40,000 gal	Scale	2.5 x 11	---
BGM-2123X	105239	0.2	1.70	15,000 gal	Cyst, Sediment, Chlorine Taste and Odor	2.5 x 11	HF35
BGM-2123P	105240	0.2	1.70	15,000 gal	Scale, Cyst, Sediment, Chlorine Taste and Odor	2.5 x 11	HF35-S
BGM-2125X	105241	5.0	1.70	15,000 gal	Sediment, Chlorine Taste and Odor	2.5 x 11	HF25
BGM-2125P	105242	5.0	1.70	15,000 gal	Scale, Sediment, Chlorine Taste and Odor	2.5 x 11	HF25-S
BGM-2416P	105265	10.0	7.50	50,000 gal	Scale, Sand, Silt, Sediment, Rust	2.5 x 14	---
BGM-2416X	105264	10.0	3.00	75,000 gal	Sand, Silt, Sediment, Rust	2.5 x 14	---
BGM-2423P	105257	0.2	3.00	30,000 gal	Scale, Cyst, Turbidity, Sediment, Chlorine Taste and Odor	2.5 x 14	HF-40S
BGM-2423X	105256	0.2	3.00	30,000 gal	Cyst, Turbidity, Sediment, Chlorine Taste and Odor	2.5 x 14	HF-40
BGM-2425P	105259	5.0	3.00	30,000 gal	Scale, Chlorine Taste and Odor	2.5 x 14	HF45-S
BGM-2425X	105258	5.0	2.10	30,000 gal	Chlorine Taste and Odor	2.5 x 14	HF45
BGM-2433P	105263	0.2	1.70	10,000 gal	Scale, Cyst, Turbidity, Sediment, Chloramine, Chlorine Taste and Odor	2.5 x 14	HF60-CL
BGM-2433X	105262	0.2	1.70	10,000 gal	Cyst, Turbidity, Sediment, Chloramine, Chlorine Taste and Odor	2.5 x 14	HF60-CL
BGM-2400N	105245	25.0	2.00	2,000 gpg*	Softening	2.5 x 14	PS165N
BGM-2400P	105249	10.0	7.50	50,000 gal	Scale	2.5 x 14	---
BGM-2400W	105247	25.0	2.00	1,700 gpg*	Softening	2.5 x 14	---
BGM-4323P	105253	0.2	3.40	40,000 gal	Scale, Cyst, Turbidity, Sediment, Chlorine Taste and Odor	4.5 x 14	HF60-S
BGM-4323X	105251	0.2	3.40	40,000 gal	Cyst, Turbidity, Sediment, Chlorine Taste and Odor	4.5 x 14	HF60
BGM-4325P	105252	5.0	3.40	40,000 gal	Scale, Chlorine Taste and Odor	4.5 x 14	HF65-S
BGM-4325X	105250	5.0	3.40	40,000 gal	Chlorine Taste and Odor	4.5 x 14	HF65
BGM-4923P	105255	0.2	5.00	60,000 gal	Scale, Cyst, Turbidity, Sediment, Chlorine Taste and Odor	4.5 x 20	HF90-S
BGM-4923X	105261	0.2	7.50	60,000 gal	Cyst, Turbidity, Sediment, Chlorine Taste and Odor	4.5 x 20	HF90
BGM-4925P	105254	5.0	5.00	60,000 gal	Scale, Chlorine Taste and Odor	4.5 x 20	HF95-S
BGM-4925X	105260	5.0	5.00	60,000 gal	Chlorine Taste and Odor	4.5 x 20	HF95
BGM-4933P	105267	0.2	3.50	30,000 gal	Scale, Cyst, Turbidity, Sediment, Chloramine, Chlorine Taste and Odor	4.5 x 20	PS195
BGM-4933X	105266	0.2	3.50	30,000 gal	Cyst, Turbidity, Sediment, Chloramine, Chlorine Taste and Odor	4.5 x 20	HF95-CL
BGM-4900N	105244	10.0	3.00	4,500 gpg*	Softening	4.5 x 20	---
BGM-4900P	105248	10.0	15.00	150,000 gal	Scale	4.5 x 20	---
BGM-4900W	105246	10.0	3.00	3,000 gpg*	Softening	4.5 x 20	---
BGM-4916P	105269	10.0	15.00	150,000 gal	Scale, Sand, Silt, Sediment, Rust	4.5 x 20	HF65-S-SR
BGM-4916X	105268	10.0	15.00	150,000 gal	Sand, Silt, Sediment, Rust	4.5 x 20	---

* Capacity is estimated based upon standard water conditions. Actual capacity may vary based upon incoming water characteristics.

** Cuno is a registered trademark of the 3M Company.

All cartridges are sold in case quantities. BGM filters come 4 to a case.

AQUAMOR FOODSERVICE LEGACY LINE FITS 3M/CUNO®*

MODEL NUMBER	PART NUMBER	MICRON	FLOW RATE	CAPACITY	REDUCES	DIMENSIONS	FITS IN PLACE OF
BGC-0200S	105192	5.0	0.50	1,500	Scale, Sediment, Rust, Chlorine Taste and Odor	2.5 x 8.4	EQ-17-TL
BGC-2000S	105069	10.0	5.00	---	Scale, Sediment	3.19 x 12.25	CFS8000-S 55854-01
BGC-2000R	106097	---	0.5	400 gpg	Scale, Sediment	3.9 x 12.25	---
BGC-2100	105070	10.0	5.00	12 Months	Sand, Silt, Sediment, Rust	3.19 x 12.25	CFS-8110
BGC-2100S	105071	10.0	5.00	12 Months	Scale, Sand, Silt, Sediment, Rust	3.19 x 12.25	CFS8110-S
BGC-2200	105072	0.5	1.67	20,000	Sand, Silt, Sediment, Rust, Chlorine Taste and Odor	3.19 x 12.25	CFS-8812-X, CFS 8112, AP-517, AP-DW85
BGC-2200S	105073	0.5	1.67	20,000	Scale, Sand, Silt, Sediment, Rust, Chlorine Taste and Odor	3.19 x 12.25	CFS8112-S, CFS8112-X-S
BGC-2300	105049	5.0	1.67	10,300	Sand, Silt, Sediment, Rust, Chlorine Taste and Odor	3.19 x 12.25	CFS8720
BGC-2300S	105074	5.0	1.67	10,300	Scale, Sand, Silt, Sediment, Rust, Chlorine Taste and Odor	3.19 x 12.25	CFS8720-S, CFS517, CS-61
BGC-3000C	105163	25.0	1.00	6 Months	pH, Mineral Balance	3.19 x 15.50	---
BGC-3000R	105076	25.0	0.50	1900 gpg	Softening	3.19 x 15.50	SWC1350-C (55992-07) SWC900-C (55992-03)
BGC-3100S	105077	10.0	5.00	12 Months	Scale, Sand, Silt, Sediment, Rust	3.19 x 15.50	CFS8110-S
BGC-3200	105078	0.5	2.10	27,000	Sand, Silt, Sediment, Rust, Chlorine Taste and Odor	3.19 x 15.50	CFS8112-EL, CFS8812-ELX
BGC-3200S	105079	0.5	2.10	27,000	Scale, Sand, Silt, Sediment, Rust, Chlorine Taste and Odor	3.19 x 15.50	CFS8112-EL-S, CFS8112-ELX-S
BGC-3300	105080	5.0	2.10	14,000	Sand, Silt, Sediment, Rust, Chlorine Taste and Odor	3.19 x 15.50	CFS8720-EL, CFS8110-EL
BGC-3300S	105081	5.0	2.10	14,000	Scale, Sand, Silt, Sediment, Rust, Chlorine Taste and Odor	3.19 x 15.50	CFS8720-EL-S

* Cuno is a registered trademark of the 3M Company.
All cartridges are sold in case quantities. BGC filters come 6 to a case.

AQUAMOR FOODSERVICE LEGACY LINE FITS EVERPURE®*

MODEL NUMBER	PART NUMBER	MICRON	FLOW RATE	CAPACITY	REDUCES	DIMENSIONS	FITS IN PLACE OF
BGE-1200	105088	0.5	1.67	3,500	Sediment, Rust, Chlorine Taste and Odor	3.19 x 6.5	OW-200L, OW2, OW4, 2H-L, 4H-L, 2FC, 2FC-S
BGE-1200S	105067	0.5	1.67	3,500	Scale, Sediment, Rust, Chlorine Taste and Odor	3.19 x 6.5	OW-200L, OW2-Plus, OW4-Plus, 2H-L, 4H-L, 2FC
BGE-3100S	105055	5.0	7.5	12 Months	Sand, Silt, Sediment, Rust	3.19 x 16.5	7SI
BGE-3200	105053	0.5	2.10	29,000	Cyst, Sediment, Rust, Chlorine Taste and Odor	3.19 x 16.5	2FC, 4CB5, 4FC, 4FC5, 4HC-H, 7TO-BW, 7FC, MC
BGE-3200S	105054	0.5	2.10	29,000	Cyst, Scale, Sediment, Rust, Chlorine Taste and Odor	3.19 x 16.5	2FC-S, 2K-Plus, 4CB5-K, 4SI, 4CB5-S, 4FC-S, 4FC5-S
BGE-3300	106074	5.0	2.10	15,000	Sediment, Chlorine Taste and Odor	3.19 x 16.5	4H Filter, 4K Plus, H-100, H-104, MD-CD, OW4-Plus
BGE-3300S	106075	5.0	2.10	15,000	Sediment, Scale, Chlorine Taste and Odor	3.19 x 16.5	4H Filter, 4K Plus, H-100, H-104, MD-CD, OW4-Plus
BGE-3500	106077	0.5	0.50	1,000	Lead, VOC	3.19 x 16.5	---
BGE-3500+	106076	0.5	1.50	6,000	Lead	3.19 x 16.5	---
BGE-4000R	105089	25.0	0.50	2,500 gpg	Softening, Sediment	3.19 x 21.5	7SO, ES06, ES07
BGE-4100S	105058	10.0	4.00	20,000	Scale, Sediment	3.19 x 21.5	---
BGE-4200	105056	0.5	2.90	40,000	Cyst, Sediment, Rust Chlorine Taste and Odor	3.19 x 21.5	7CB5, 7FC5, HC-H, MC, MD-CE, PRO3500, XC
BGE-4200S	105057	0.5	2.90	40,000	Cyst, Scale, Sediment, Rust Chlorine Taste and Odor	3.19 x 21.5	7CB5-K, 7CB5-S, 7FC5-S, 7SI, BW 4400, BW7 TOS
BGE-4400	105066	0.5	1.70	4,000	Sediment, Chloramine, Chlorine Taste and Odor	3.19 x 21.5	---
BGP-1200S	105087	0.5	1.67	8,000	Scale, Sediment, Rust, Chlorine Taste and Odor	3.19 x 11	2H-L, 4C, H-100, H-104, H300-HSD, H54, S-100
BGP-1300S	105138	5.0	1.67	8,000	Carbon Block, Lime Scale Protection	3.19 x 11	2CB-GW, 2CB5-K, 2CB5-S, BH, BH2
BGP-2000S	105162	10.0	1.67	10,000	Scale, Sediment	3.19 x 13.75	---

* Everpure® is a registered trademark of Everpure Inc. Northbrook, IL
 All cartridges are sold in case quantities. BGE filters come 4 to a case. BGP filters come 6 to a case.

AQUAMOR FOODSERVICE LEGACY LINE FITS EVERPURE®* (CONT'D)

MODEL NUMBER	PART NUMBER	MICRON	FLOW RATE	CAPACITY	REDUCES	DIMENSIONS	FITS IN PLACE OF
BGP-2200	105116	0.5	1.67	23,000	Sediment, Rust, Chlorine Taste and Odor	3.19 x 13.75	2FC, 4FC, MC, MC2, XC, XC2, 4C Filter, MD-HJN
BGP-2200S	105117	0.5	1.67	23,000	Scale, Sediment, Rust, Chlorine Taste and Odor	3.19 x 13.75	2FC-S, 2K-Plus, 4FC-S, 4K-Plus, 4SI, i2000, i4000
BGP-2300	105118	5.0	1.67	10,000	Sediment, Rust, Chlorine Taste and Odor	3.19 x 13.75	4CB5, EV9617-21
BGP-2300S	105119	5.0	1.67	10,000	Scale, Sediment, Rust, Chlorine Taste and Odor	3.19 x 13.75	4CB5-K, 4CB5-S, BH2
BGP-3000S	105115	10.0	1.67	14,000	Scale, Sediment	3.19 x 18.25	---
BGP-3000W	117102	---	3.00	2,000 gpg	Scale	3.375 x 15.5	---
BGP-3200	105120	0.5	2.10	31,000	Sediment, Rust, Chlorine Taste and Odor	3.19 x 18.25	7TO-BW, 7FC, 7CLM, HC-H, MC, MD-CE, PRO3500, XC
BGP-3200S	105121	0.5	2.10	31,000	Scale, Sediment, Rust, Chlorine Taste and Odor	3.19 x 18.25	H-300, H-300M, H-1200, HCH-CTO, HF-H, 14000,
BGP-3300	105122	5.0	2.10	14,000	Sediment, Rust, Chlorine Taste and Odor	3.19 x 18.25	7TO, 7CB5, 4HC-H, 6TO BW, 7TO BW, 4FC5, 4FC5-S
BGP-3300S	105123	5.0	2.10	14,000	Scale, Sediment, Rust, Chlorine Taste and Odor	3.19 x 18.25	H-300-HD, H-300-HSD, 7CB5-K, 7CB-S
SI-10	105143	25.0	6.00	6 Months	Scale	1.3 x 8.3	SS-IMF, EV9797-32, EV9799-42

* Everpure® is a registered trademark of Everpure Inc. Northbrook, IL

All cartridges are sold in case quantities. BGE filters come 4 to a case. BGP filters come 6 to a case. SI-10 comes 20 to a case.



AQUAMOR FOODSERVICE LEGACY LINE FITS HOSHIZAKI®*

MODEL NUMBER	PART NUMBER	MICRON	FLOW RATE	CAPACITY	REDUCES	DIMENSIONS	FITS IN PLACE OF
BGH-1200	105191	0.5	1.67	3,500	Sand, Silt, Sediment, Rust, Chlorine Taste and Odor	3.19 x 6.5	Pro series, BW-style heads
BGH-3200S	105131	0.5	2.10	29,000	Cyst, Scale, Sediment, Rust, Chlorine Taste and Odor	3.19 x 16.5	HC, HC-H, HCH-CTO, HF, HF-H, 4HC-H, PRO3500
BGH-4200S	105132	0.5	2.90	40,000	Cyst, Scale, Sediment, Rust, Chlorine Taste and Odor	3.19 x 21.5	H-300, H-300M, H-1200, HCH-CTO, HF-H, MH, OW200L

* Hoshizaki is a registered trademark of Hoshizaki Electric Co., Ltd. Corporation Japan.
All cartridges are sold in case quantities. BGH filters come 4 to a case.



AQUAMOR FOODSERVICE LINE FITS ANTUNES®*

MODEL NUMBER	PART NUMBER	MICRON	FLOW RATE	CAPACITY	REDUCES	DIMENSIONS	FITS IN PLACE OF
BGA-4361X	105454	0.02	7.90	3 - 5 Years	Cyst, Turbidity	4 x 20	L-420
BGA-4961X	105455	0.02	13.00	3 - 5 Years	Cyst, Turbidity	4 x 40	L-440
BGA-4926X	105453	10.0	8.00	26,000	Sand, Silt, Sediment, Rust, Chlorine Taste and Odor	4 x 20	7000669
BGA-4926B	105452	10.0	8.00	26,000	Sand, Silt, Sediment, Rust, Chlorine Taste and Odor	4 x 20	---
BGA-4932X	105451	0.5	5.00	21,000	Sand, Silt, Sediment, Rust, Chloramine, Chlorine Taste and Odor	4 x 20	7000762
BGA-4924X	105450	1.0	7.70	255,000	Sand, Silt, Sediment, Rust, Chlorine Taste and Odor	4 x 20	7000982

* Antunes is a registered trademark of A. J. Antunes & Co.
All cartridges are sold in case quantities. BGA filters come 4 to a case.



AQUAMOR



42188 Rio Nedo
Temecula, CA 92590

T: 1-866-218-8473

T: 951-541-9517

F: 951-296-105

aquamor.com
info@aquamor.com